

WiFi THERMOSTAT CONFIGURATION INSTRUCTION MANUAL



iOS

Android



Smart Life



STEP 1: INITIALIZE YOUR THERMOSTAT

- Turn off your WiFi thermostat, As shown in "Figure 1"
- Press and hold the switch button, After hearing "beeps" sound, The thermostat will display as "Figure 2"
- Press the up button to change the value "00" to "01", As shown in "Figure 3"
- Press the switch button. The thermostat will display as "Figure 4", Finishing all the above steps, then the initialization of your thermostat has been successfully completed.



(1)



(2)



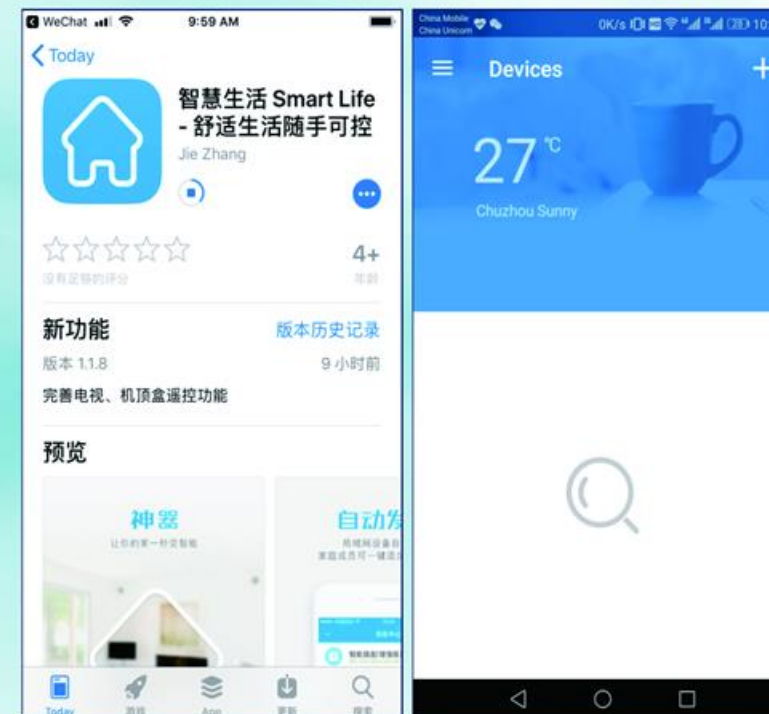
(3)



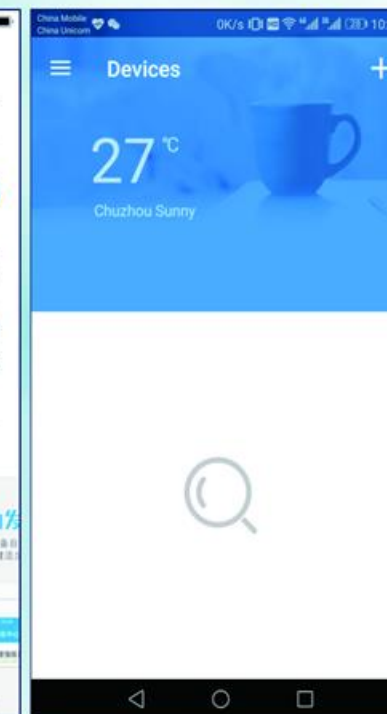
(4)

STEP 2: INSTALL CONTROL APP IN YOUR MOBILE

Scan the QR code in the left of this page with your mobile phone. After scanning, your mobile will display as "Figure 5", Choose "Android" or "apple" according to your phone system. If there is no response, Please click "..." on the top right corner, use your mobile browser to download the APP. After successful installation, your mobile phone will display as "figure 6".



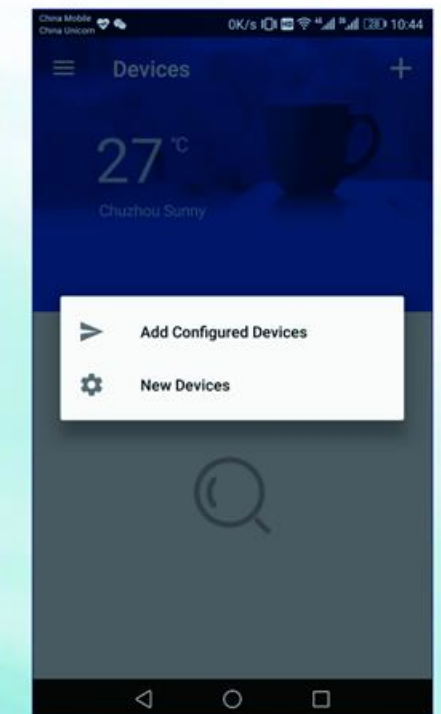
(5)



(6)

STEP 3: ADD NEW DEVICE IN YOUR CONTROL APP

- Make sure the WiFi function of your WiFi router works properly, (please note our WiFi thermostat only supports 2.4G network, not available for 5G network)
- Open your APP-Smartlife, select the right country, this is very important, Wrong selection will cause the failure of WiFi connecting, (If country is improperly selected, you can click "≡" in the top left corner, then click "Setting" to re-select the right country.)
- Click "+" in the top right corner as shown in Figure 6,
- Click "New Devices" as shown in Figure 7,



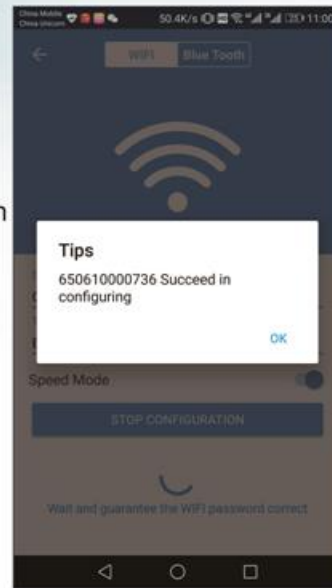
(7)

e Input your WIFI password to access your WIFI network as shown in Figure 8,



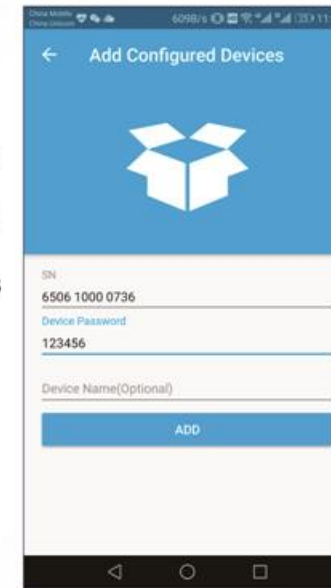
(8)

g Wait the configuration is successfully completed as shown in Figure 10,



(10)

i Input device password "123456" as shown in Figure 12, (Initial device password is 123456)



(12)

k Add device successfully as shown in Figure 14,



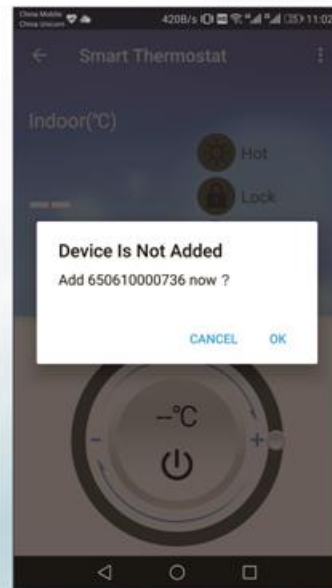
(14)

f Click "START CONFIGURATION" as shown in Figure 9,



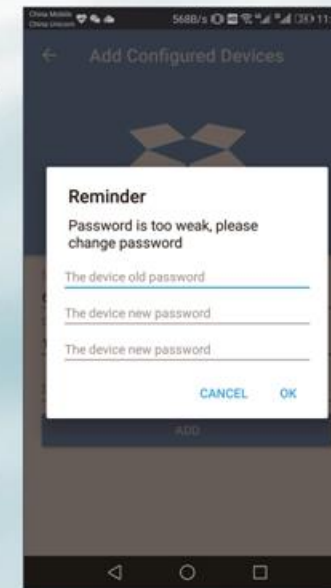
(9)

h Add device, click "OK" as shown in Figure 11,



(11)

j You can revise initial password or cancel directly as shown in Figure 13,



(13)

l Now you can control your WIFI thermostat with your mobile APP as shown in Figure 15



(15)